



ABERRATION: \ab-uh-REY-shuhn\ n
the act of deviating from the ordinary, usual or normal type.

ABERRATION is an exhibition of fiber art by members of Missouri Fiber Artists in conjunction with the Surface Design Association (SDA) Conference and Fiber Art Tour and Exhibitions (FATE).

Missouri Fiber Artists are invited to submit artwork which is "out of the ordinary" or "unexpected" emphasizing embellishment or surface design using your chosen fiber technique.

SUBMISSIONS

- Artists must be a member of MoFA. To join: www.missourifiberartists.com
- Maximum of two pieces may be entered per artist.
- Pieces must have been completed in the past 2 years.
- All pieces must be artist's original design or concept and executed solely by the artist.
- Pieces executed under classroom/educational/supervisory guidance are not eligible.
- Pieces must fit through a standard door.
- There is no jury fee. There will be a \$15 participation fee for all accepted artists.

AWARDS

Awards will be presented for excellence in innovative and/or traditional fiber artwork.

JURYING

Exhibition Committee will review all images and make the exhibition selections.

EXHIBITION & SALES

All accepted work must remain in the Gallery for the duration of the exhibition.

MoFA and the museum will split 40% commission on all sales made directly from the exhibit.

INSURANCE & SHIPPING

Insurance for artwork is the responsibility of the artist. While reasonable care is taken when handling artwork, Boone County Historical Museum and MoFA do not assume any responsibility for loss or damage.

All costs associated with shipping artwork to and from Boone County Historical Museum (including transit insurance) is the financial responsibility of the artist.

All work will be returned in the original shipping cartons.

IMAGES

High quality or professional images must accurately represent work.

CD images must be a minimum of 3"X4" and maximum of 5"X7" at 75 DPI.

Maximum 2 images per piece (1 full view + 1 detail) Slides or snapshots will not be accepted.

Image must be labeled as follows:
Artist name, title of work, submission number, jpg example:

smith.forestlookout.1.jpg
smith.forestlookout.1detail.jpg
smith.morningwalk.2.jpg,

Images will become the property of MoFA.

Please test your CD to make sure it is readable.

SCHEDULE

Deadlines for entries: Friday, February 20, 2009 (Note this is not a postmark date)
Notification will be emailed March 3, 2009.

Accepted artwork must be received by May 1, 2009.

APPLICATION REQUIREMENTS

- CD with images (see requirements)
- Completed Entry Form
- Artist Statement: One page maximum related to artwork submitted.

MAIL TO:

Leandra Spangler
405 Texas
Columbia, MO 65202

For more information:

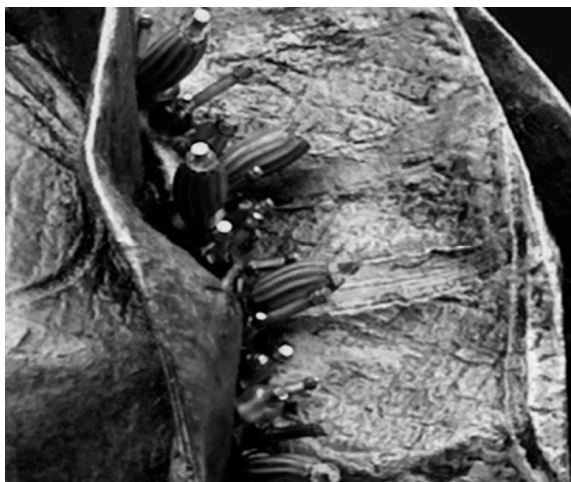
Website: <http://www.missourifiberartists.com>
Email: Leandra Spangler or Bonnie Black
leandra@bearcreekpaperworks.com
bonjifiber@gmail.com

Entry Deadline
February 20, 2009

Call for Entry

ABERRATION

Juried Fiber Exhibition
May 12 – July 9, 2009



Sponsored by

Missouri Fiber Artists (MoFA) in
conjunction with the Surface Design
Association (SDA) Conference
www surfacedesign.org and
Fiber Arts Tour & Exhibits (FATE)
www.fatecolumbia.com

at

Montminy Gallery
Boone County Historical Museum
Columbia, MO

Leandra Spangler
405 Texas
Columbia, MO 65202

ABERRATION Application Form

ARTIST'S NAME _____

ADDRESS _____

CITY _____

STATE _____ ZIP _____

DAY PHONE _____

EVENING PHONE _____

email _____

1. TITLE OF WORK _____

Dimensions (HxWxD) _____

Date of completion _____

Materials Used and construction techniques
employed _____

Retail price including 40% commission _____

___ NFS, insurance value if not for sale _____

2. TITLE OF WORK _____

Dimensions (HxWxD) _____

Date of completion _____

Materials Used and construction techniques
employed _____

Retail price including 40% commission _____

___ NFS, insurance value if not for sale _____

SIGNATURE